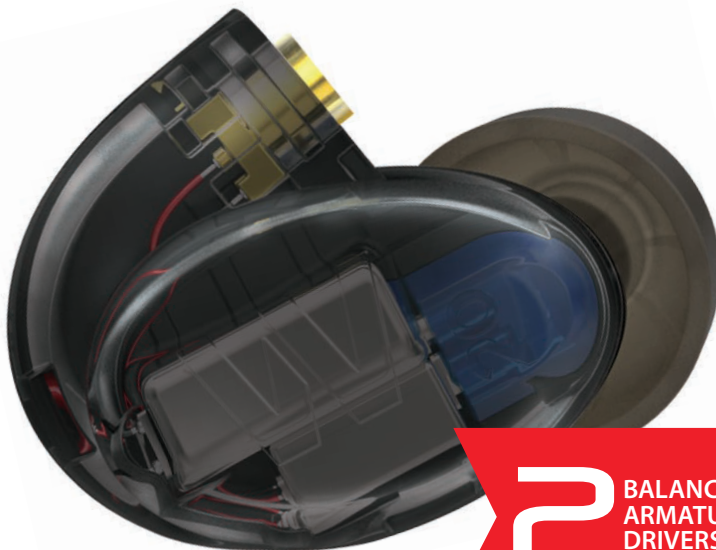


## OVERVIEW:

The Westone Audio UM Pro 20 is a professional tool packed with features that help you bring down the house every time you get on stage. The dual driver balanced armature design has the range and raw output for any stage condition. Individually hand-crafted, the UM Pro 20 is comfortable and secure with Up and Over™ cable routing that helps prevent microphonics and keeps your earphones securely in place. The newly designed UM Pro 20 provides increased ergonomics, enhanced durability, and Westone Audio proprietary MMCX Audio™ connection to ensure a perfect connection every time.



**2** BALANCED  
ARMATURE  
DRIVERS

## IDEAL FOR:

On-Stage Monitoring, Drummers, Bass Players

## TECH SPECS:

Sensitivity	119dB SPL @ 1mW
Frequency Response	20 Hz - 18 kHz
Impedance	27 ohms @ 1 kHz
Passive Noise Attenuation	25dB
Driver	Dual balanced armature drivers with passive crossover
Cable	MMCX Audio® Cable
Cable Length	52" / 132 cm

## IN THE BOX:

- UM Pro 20 Universal-Fit In-Ear Monitors
- MMCX Audio® Cable
- 5 Pair WA Ergonomic Ear Tip Technology Foam Tips
- Monitor Vault
- 2 Year Limited Warranty



### WA ERGONOMIC EAR TIP TECHNOLOGY

60 years of experience designing products for the ear, has resulted in a universal-fit earpiece that is compact, low-profile, lightweight, and extremely comfortable. Our WA Ergonomic Ear Tip Technology enhances the performance of the UM Pro 20 by ensuring a great fit and seal, right out of the box.



### BALANCED-ARMATURE DRIVERS

Westone Audio's proprietary balanced-armature drivers provide enhanced sonic detail and frequency range that extends well beyond other in-ear solutions.



### MMCX AUDIO™ REPLACEABLE CABLE

High-strength, ultra-low resistance tensile wire design with aramid fiber, with the most advanced MMCX connector available in the industry.



### PRECISE ACOUSTIC SYMMETRY

Left and right earpiece responses are matched to an extraordinarily tight +/- 2dB tolerance. This extends well beyond typical in-ear solutions.